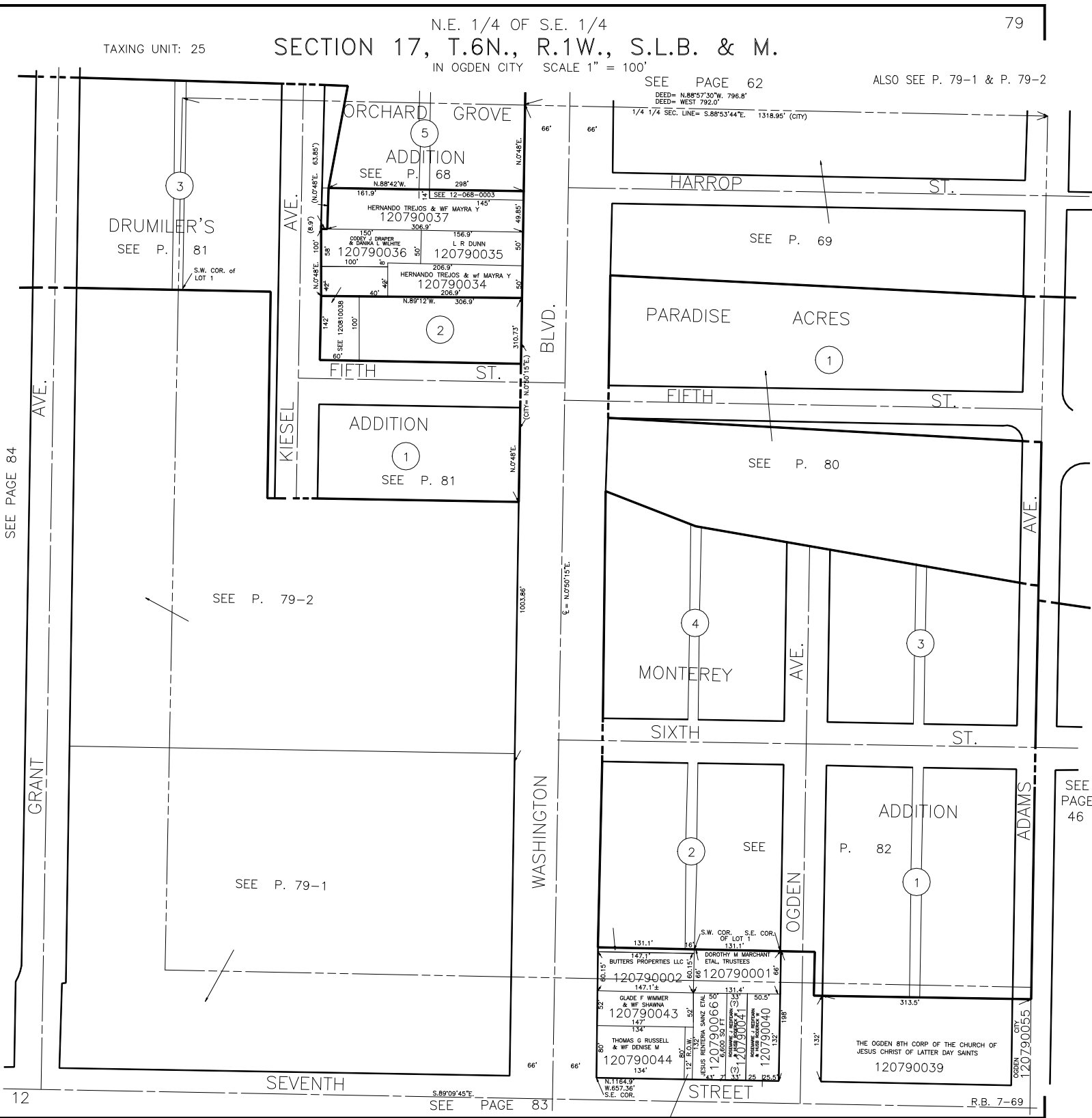


N.E. 1/4 OF S.E. 1/4  
SECTION 17, T.6N., R.1W., S.L.B. & M.  
IN OGDEN CITY SCALE 1" = 100'

TAXING UNIT: 25

SEE PAGE 62

ALSO SEE P. 79-1 & P. 79-2



SEE PAGE 84

GRANT AVE.

12

SEE PAGE 83

(JESUS RENTERIA SAINZ ETAL)  
120790042  
1040 SQ FT

SEE PAGE 46

ADAMS AVE.

OGDEN CITY  
120790055

R.B. 7-69